

WHERE THE HARMONICA WHICH FITS YOU MOST IS FOUND!

Diatonic Harmonica Guide

Feature	Standard Models							Advanced Models	Specialized Models
	M-20	M-20S	M-20W	C-20	MR-350/MR350V/HA-20	MR-200	F-20/F-20J		
Tone Color (Comb)	Light tone (Resin)								
	Wooden-like Solid tone (Resin with 50% natural wooden fiber)								
	Solid, Warm and Resonant tone (Wooden)								
	Bright, Solid and Crispy tone (Aluminum / Brass)								
Blowing Response (Reed)	Easy response to light breath control								
	Thick tone with a medium breath control								
	More dynamic tone with heavier breath control								※
Sound (Cover plates)	Resonant, Open Sound (Stainless Steel, with sleeve)								
	Condensed thick sound (Stainless Steel / Brass, without sleeve)								
	Warm, Woody Sound (Wooden)								
	Direct reed sound by air-tightness								

※ SUB30 is a special model. It is a different feeling than the other diatonic Harmonicas.



MANJI
PROFESSIONAL DIATONIC HARMONICA
REVOLUTION WITHIN TRADITION



Billy Branch (U.S.A)

Most players love the sound of a traditional wooden comb, but wood is susceptible to moisture and expands without careful sealing. SUZUKI decided to take a bold new approach and created an all-new resin comb material, which has the durability, non-absorbency and warm timbre of a wooden comb. Not only does it simulate the feel and sound of wood – this material contains more than 50% of natural wood fibers. The Manji's formidable stainless steel cover plates reflect the best of Suzuki innovation. To respond to the desires of blues and rock harmonica players, the back sides of the covers are fully open, for maximum sound projection. Carefully researched reed lengths and profiles combining dynamic sound, long endurance and easy over-blow characteristics, complete the picture. Combined with the ultra-precise reed attachment, they respond faithfully to every subtle nuance of the player's breath. The Manji M-20 is available in a total 46 keys.

- M-20** Available in 13 keys : C, G, A, D, E, F, B \flat , B, F \sharp , E \flat , A \flat , D \flat and H G
- M-20-L** Available 5 keys : Low C, Low D, Low E, Low F
- M-20Nm** Natural Minor Key
- M-20Hm** Harmonic Minor
- M-20CT** Country
- M-207th** Major 7th

Each available in 7 Keys : C, G, A, D, E, F and B \flat

MANJI PACKAGE

- M-20-LP** 2 Low keys set (Low C Low D) w/ EVA zipper case



- M-20-MP** 3 Popular keys set (C G A) w/ EVA zipper case



MANJI Set

THE PERFECT SET!

The Suzuki Manji Harmonica set new standards for out-of-the-box 10-hole diatonic harmonicas when it was released in 2009. Its unprecedented levels of precision in reed alignment and reed/slot tolerances, combined with a unique wood/resin composite comb and gorgeous ergonomic cover plates, made it an instant hit with professional players and amateurs alike. Now SUZUKI offers the Manji in a special 7 harp soft case for music sessions with your friends. Hold all your favorite keys in one handy folding soft case, with convenient carry strap.

- M-20-S** Manji 7 key set : C, G, A, D, E, F and B \flat



OLIVE
PROFESSIONAL DIATONIC HARMONICA
AN ENCOUNTER WITH AN EXCITING HARMONICA!



Koel Tanaka (Japan)

The OLIVE is a wonderful harmonica, with a combination of play-ability from the MANJI together with the robust sound of a PROMASTER. The tone is very solid, strong and evenly distributed over the entire tone spectrum, originated from low-end register together with a powerful mid-range and a smooth top octave. The Suzuki OLIVE is a masterpiece right out of the box, tuned to perfection and a beauty to behold in its detailed precision. The OLIVE is suitable for playing in styles of old-time blues to modern over-bend techniques. The OLIVE diatonic harmonica is developed, made and played in the 21st century. I truly love it! Words from Filip Jers.

- C-20** Available in 14 keys : C, G, A, D, E, F, B \flat , B, F \sharp , E \flat , A \flat , D \flat , H G and Low F



NEW

MANJI Sky

PROFESSIONAL DIATONIC HARMONICA

Pursuing the lightest reed response and tone

The new series Manji Sky is born from the Suzuki 10-hole Manji harmonica. Manji has a powerful blowing feel and tone, while the Manji Sky has a lighter feel, by comparison. The reeds are developed exclusively for the Manji Sky, while pursuing the lightest reed response and tone among Suzuki's 10-hole harmonicas. The Manji Sky is ideal for playing music with phrases that require vamp or quick note changes.

- M-20S** Available in 14 standard keys: C, G, A, D, E, F, B \flat , B, F \sharp , E \flat , A \flat , D \flat , Hg and LowF



NEW

MANJI M-20W

PROFESSIONAL DIATONIC HARMONICA

A new tone from the Manji M-20 created by walnut cover plates

This new Suzuki MANJI M-20W, 10-hole harmonica has wooden cover plates. The Manji M-20W has the same powerful blowing feel as the Manji M-20, but features a more mellow tone, with treble components suppressed. Like the Manji M-20 and the Manji Sky M-20S, the M-20W is tuned to Compromised Just Tuning (between Just Tuning and Equal Tuning) that emphasizes the resonance of chords, which is most useful to play in blues and rock with many vamps.

- M-20W** Available in 7 standard keys: C, G, A, D, E, F and B \flat

In which key would you like to perform?

Here are some pointers for choosing the right key. You would normally choose a different key depending on how you want to perform the music, in line with the tune.

- If you emphasize the melody line clearly in your performance, you would work in 1st position.
- If you want to take blues and rock into your improvised performance, you would play a fifth up in 2nd position, which has a more cool and bluesy character.
- If you play a minor tune, you need a Harmonica a tone lower in 3rd position.

KEY	C	D \flat	D	E \flat	E	F	F \sharp	G	A \flat	A	B \flat	B
1st	C	D \flat	D	E \flat	E	F	F \sharp	G	A \flat	A	B \flat	B
2nd	F	F \sharp	G	A \flat	A	B \flat	B	C	D \flat	D	E \flat	E
3rd	B \flat	B	C	D \flat	D	E \flat	E	F	F \sharp	G	A \flat	A



Pro master

DELUXE 10 HOLE DIATONIC HARMONICA

THE BEST HARP YOU'VE EVER PLAYED!

We are proud to offer the best professional harmonica you have ever played! Consider the machined brass reed plates (replaceable) or the computer-aided laser cut, tuned and bendable reed system and the satin anodized, milled, billet aluminum alloy comb that holds it all together. All these cutting edge components combine to produce an instrument unparalleled in the industry. The ergonomically designed, polished brass cover plates provide maximum playing comfort whilst the inner components produce the rich tones and clarity so sought after by professional players. Once you play a Promaster, you won't want to put it down. Promaster is also available in a set of 6, including a handy folding soft case, with convenient carry strap.

- MR-350** Available in 14 keys : C, G, A, D, E, F, B \flat , B, F \sharp , E \flat , A \flat , D \flat , H G and Low F



Promaster Set
MR-350SN Promaster 6 key set : C, G, A, D, F and B \flat



Pro master Valved

DELUXE 10 HOLE DIATONIC VALVED HARMONICA

INNOVATIVE AND UNCOMPROMISING!

On a normal harp, note bending is available on the lower draw reeds (holes 1-6) and upper blow reeds (holes 7-10) only, but the lower blow reeds and upper draw reeds cannot be bent in pitch. The special valving of the Suzuki Promaster MR-350V allows the player to give EVERY note soulful bending and vibrato! With practice, the extra bending control can allow chromatic phrases to be played, as an alternative to over-blowing. It's simply a more expressive harp; that's the reason the MR-350V is the first-choice diatonic of top players.

- MR-350V** Available in 8 keys : C, G, A, D, E, F, B \flat and Low F



FABULOUS Series

PROFESSIONAL DIATONIC HARMONICAS

A ROLLS ROYCE OF DIATONIC HARMONICAS

Now Suzuki brings the same exacting design philosophy and advanced manufacturing process, as used in the Fabulous chromatic to the popular 10 Hole diatonic Harmonica. Also called the Fabulous, the model has a warm tone and amazing reed response, which comes from an uncompromising commitment to achieving perfection, through the use of specially designed top-quality components.

- F-20E**(Equal Tuning) Available in 5 keys : C, G, A, D and B \flat
- F-20J**(Just Tuning) Available in 5 keys : C, G, A, D and B \flat



Michael Monroe (Finland)



BLUESMASTER

PROFESSIONAL 10 HOLE DIATONIC HARMONICA

IT'S THE BEST OF BOTH WORLDS!

Combining the affordability of our popular Folkmaster with our world famous Promaster, the Bluesmaster is an easy to play, easy to own professional harmonica. Stainless steel covers are durable and ergonomically designed for easy handling. Inside, solid phosphor bronze reeds and an ABS plastic comb give superb sound projection and tonal clarity. The rugged Bluesmaster is virtually indestructible! It looks good, sounds good and feels good. The Bluesmaster is also available in a set of 6, with handy folding soft case and convenient carry strap.

- MR-250** Available in 12 standard keys : C, G, A, D, E, F, B \flat , B, F \sharp , E \flat , A \flat and D \flat



Bluesmaster Set
MR-250SN Bluesmaster 6 key set : C, G, A, D, F and B \flat



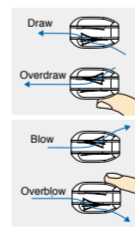
OVER DRIVE

DELUXE BENDABLE 10 HOLE DIATONIC HARMONICA

IT'S THE ONLY HARMONICA OF ITS KIND!

Years in the making, the amazing Overdrive Harmonica is so unique, it even has a special patent to protect its incredible design. Precisely placed holes in the top and bottom of this harmonica allow you to produce thick, rich and beautiful over-blow and over-draw sounds. Although players have been bending notes for more than a century, it has only recently been discovered that when you draw bend, it is the BLOW reed that makes the bend note. Conversely, when you blow bend, it is the opposite blow reed in the same air channel that makes the bend note. With a little practice, the Overdrive Harmonica will let you blow and draw notes with greater control and much bigger volume than any harmonica you've ever played! The Overdrive includes a hard shell carrying case.

- MR-300** Available in 7 keys : C, G, A, D, E, F and B \flat



Maintainability

If care is taken, Suzuki Harmonica will last indefinitely, as replacement reed plate sets are available in every key, for most harmonicas. Suzuki Reed plates for our 10 Hole Harmonicas are easy to replace. They are screwed to the comb, unlike some other manufacturers are still using nails to fix the reed plates to the comb. This allows repeated exchange of plates, so you can continue playing your original Harmonica in good condition.



SUB30

PROFESSIONAL DIATONIC HARMONICA

ULTRA BEND!

The Suzuki SUB30 Ultra-Bend is a truly revolutionary diatonic harmonica! Suzuki's advanced reed-plate technology has enabled us to fit 30 reeds in the size of a normal 10-hole harp, 20 on the top reed-plate and 10 on the lower. The extra 10 are sympathetic reeds that allow you to bend the bottom 6 blow notes and the upper 4 draw notes, using the same type of easy controllable technique as the normal bends. The harmonica becomes chromatic through simple bending technique. The chart above shows all the notes you can now get with draw and blow bending throughout the harp.

- SUB30** Available in 3 keys : C, A and D

Blow-Draw	Bending Blow	Bending Draw
U	12	13
G	E	G
B	F \sharp	A
D	A	D
F	F	F
A	D	A
B	E	G
D	A	D
B	E	G

HARMONICA SET WITH SILENCER

SILENCER SOUND SYSTEM

SHINOBI

for 10-hole Diatonic Harmonica / 12-hole Chromatic Harmonica

SHINOBI is the world's first mass produced Diatonic and Chromatic harmonica set with a silencer that we can practice without any anxiety, such as afraid of sound to family and neighborhood.

10hole Diatonic Harmonica

Full Set (Key of C) / SNB-20

A full set that can be played immediately after purchase.

Users Set / SNB-20CVS

A users set without the harmonica. Check the compatibility chart on the bottom of the box.

Compatible Harmonica Models

SUZUKI 10-HOLE HARMONICA
MR-350 / MR-350G / HA-20 / MR-550 / M-20 / C-20 / F-20 / PH-20N

12-hole Chromatic Harmonica

Full Set / SNB-48

A full set that can be played immediately after purchase.

Users Set / SNB-48CVS

A users set without the harmonica. Check the compatibility chart on the bottom of the box.

Compatible Harmonica Models

SUZUKI 12-hole Chromatic HARMONICA
S-48S / G-48 / G-48W / SCX-48

SHINOBI WEB GUIDE

You will find the instructions and how to use the product quite easily on our video-gaining access through the QR code.

SOUND VOLUME about

80% CUT

Compared to a case of the sound pressure of a general harmonica is 100%

SHINOBI can be used with Suzuki 10-hole harmonicas sold on the open market (excluding certain models) simply by replacing the harmonica cover.

SHINOBI can be used with Suzuki Chromatic harmonicas sold on the open market (excluding certain models) simply by replacing the harmonica cover.

SHINOBI are not sold individually.

*The harmonica supplied with the SNB-20 (Full Set, Key of C) is the same model as the C-20.

*The harmonica supplied with the SNB-48 (Full Set) is the same model as the SCX-48.



HAMMOND

PROFESSIONAL 10 HOLE DIATONIC HARMONICA

A HAMMOND IN YOUR POCKET!

Ever wanted a Hammond Organ that will fit in your pocket? Look no further. The HA-20 harmonica carries the colored Hammond logo, which looks great against its black shell. You will be immediately addicted to its beautiful sound. Includes a hard shell carrying case.

- HA-20** Available in 14 keys : C, G, A, D, E, F, B \flat , B, F \sharp , E \flat , A \flat , D \flat , H G and Low F



Beata Kossowska (Germany, Poland)



PIPE HUMMING

EASY VIBRATO 10 HOLE DIATONIC HARMONICA

Unique Design Makes Vibrato a Breeze

If you've never seen anything like our PH-20N Pipe Humming harmonica, there's a good reason. It's the only harp of its kind. The hauntingly beautiful sound of a harmonica vibrato is now as easy as playing the blues. No more struggling to get an airtight seal with your hands. Control is the name of this game. Get a perfect vibrato the very first time you try. Slow, fast, loud, low, flutter, any way you want to make your music sound. ABS comb and phosphor bronze reeds combine with special chrome plated pipe cover to create a heavy, rich, deep sound. The PH-20N from Suzuki, Pocket the Music! Uses MR-350 replacement reed plates. End of Pipe detachable for right or left hand use. Includes cloth draw-string bag.

- PH-20N** Available in 7 keys : C, G, A, D, E, F and B \flat



HARPMASTER

PROFESSIONAL 10 HOLE DIATONIC HARMONICA

TRADITIONALLY DESIGNED WITH ALL HARPISTS IN MIND

The Harpmaster features an easy to play, free blowing design with its solid ABS comb and focused note holes. The bendable laser tuned reeds produce the clarity and rich, mellow tones you would expect from much more expensive harmonicas. The classically shaped reed covers offer the look and feel of the traditional harmonica, which are built from durable polished stainless steel. The Harpmaster will provide you with years of proven performance. The Harpmaster includes a hard shell carrying case.

- MR-200** Available in 14 keys : C, G, A, D, E, F, B \flat , B, F \sharp , E \flat , A \flat , D \flat , H G and Low F



10 HOLE DIATONIC HARMONICA FOR CHILDREN AND BEGINNERS OF ALL AGES!

LARGER THAN LIFE!

The AW-1 Airwave Harmonica has a sleek modern design and is a 10-hole diatonic Harmonica the size of a Chromatic! Available in three colors (red, blue and orange) this unique harmonica is easy to hold and easy to play. There are no metal screws on the outside of the instrument like traditional harmonicas, so it is safe for young children to use. This harmonica has been made larger so that the holes are spaced widely apart, for easy location. This bright, good looking, easy to handle harmonica is a joy to use! Included with the Airwave is an instructional booklet that teaches notes, chords, and has exciting play along songs. Learning to play the Airwave harmonica is as easy as 1-2-3!

- AW-1** Available in the key of C



WORLD CLASS HARMONICAS

10 Hole Harmonica



http://www.suzukimusic-global.com/



ABOUT US

Suzuki Musical INST.MFG.CO., LTD. was founded in 1953 as a manufacturer of Harmonicas, which led to developing and manufacturing Melodions and Educational Musical Instruments that have been distributed worldwide for many years. Suzuki instruments have been used by professional players, such as the W-37 Wooden Melodion, which was awarded the GOOD DESIGN AWARD 2017. For the education field and therapy, our MP-8 Music Pads were awarded the Best Teaching Tool for Young/Elementary Students from SBO (SCHOOL BAND AND ORCHESTRA). Please see their pictures below.

In the manufacture of musical instruments, the finish of each part affects the tone and quality of the finished product. For the Harmonica, high processing precision that reduces breath leakage is greatly related to ease of playing and good response. At Suzuki, we produce all of the parts that require such processing precision in our own group and maintain high quality by conducting strict inspections. We are actively introducing advanced technologies and constantly striving for further improvement and quality.

W-37 Wooden Melodion



MP-8 Music Pad



SUZUKI MUSICAL INST. MFG. CO., LTD.

Overseas sales company : SUZUKI CORPORATION Hamamatsu, Japan

http://www.suzukimusic-global.com/



Out of This World.

The new line of Suzuki Harmonicas incorporates the latest in technology and design features to give the player a whole new world of musical expression. All Suzuki Harmonicas feature laser reed tuning with specially developed reeds that produce the widest choice of sound timbres within any harmonica line. Suzuki designed some models with an all new machined alloy body that not only controls expansion due to heat and moisture, but works to amplify and project the harmonica sound qualities. Our revolutionary power reed valve system lets you bend, draw and blow notes for unheard of versatility. New Low key models and High G keys give blues and pop players new ways to expand their favorite music. Suzuki harmonicas are designed for you, with more features, more sound and more quality, making us the world leaders in Harmonica production and innovation.

Chromatic Harmonica Guide

Feature	SIRIUS S-64C/S-64CW/S-56C S-56S/S-48S	FABULOUS F-64C/F-48SQ F-48C/F-48S	GREGOIRE MARET G-48 G-48W	SCX Series SCX-84 SCX-56/SCX-48
Tone Color (Comb)	Light tone (Resin)	●	●	●
Blowing Response (Reed)	Solid tone (Resin + Brass weights)	●	●	●
	Bright, Solid and Crispy tone (Brass)			●
Sound (Cover plates)	Easy response to light breath control	●	●	●
	More dynamic tone with heavier breath control	●	●	●
Sound (Cover plates)	Resonant, Open Sound		●	●
	Condensed thick sound (Brass, without sleeve)	●	●	●
	Warm, Woody Sound (Wooden)	● (S-64CW)		●

FABULOUS Series

PROFESSIONAL CHROMATIC HARMONICAS

THE ULTIMATE CHROMATIC HARMONICAS

Supernatural air-tightness and instant response of the reeds to every breath creates a feeling of euphoria for every player when they first try Suzuki's all-new Fabulous Chromatic Harmonica. The rich timbre of the Fabulous is a result of 21st century design, matched with respect for the best aspects of tradition, embodied in top-quality components manufactured with Suzuki's high accuracy processes.

- F-64C** 16 hole, Cross-alignment slide (pictured)
- F-48C** 12 hole, Cross-alignment slide
- F-48S** 12 hole, Straight-alignment slide
- F-48SQ** 12 hole, Straight-alignment slide, Square shape mouthpiece hole



F-48SQ

Filip Jers (Sweden)

F-64C



SIRIUS Series

SIRIUS Series S-48S/56S/56C/64C/64CW & S-48B

The concept of the Sirius series is the best all-round chromatic harmonica. It is a new standard model of Suzuki Chromatic Harmonica born by know-how and incorporating high-precision processing technology. An ideal harmonica for anyone who wants to step up to something really special. The S-48B is a bass model of this series.

PROFESSIONAL CHROMATIC HARMONICAS

EXCELLENT SOUND AND ELEGANT DESIGN

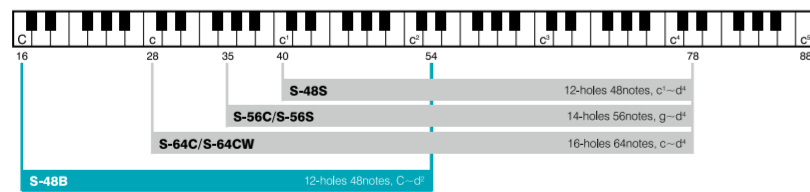
The Suzuki 'Sirius' combines excellent sound production and elegant design which will impress both audience and players alike. Suzuki have used their vast experience and know-how to invent the 'Fabulous' series, which in turn has led to the creation of the 'Sirius'. Every detail about the design of the 'Sirius' has been carefully researched, resulting in a new standard of Chromatic Harmonica. This unique model allows the player to perform a wider range of playing expressions.

- S-64C** 16 hole, Cross-alignment slide
- S-64CW** 16 hole, Cross-alignment slide (pictured)
- S-56S** 14 hole, Straight-alignment slide
- S-56C** 14 hole, Cross-alignment slide
- S-48S** 12 hole, Straight-alignment slide (pictured)
- S-48B** 12 hole, Cross-alignment slide

* Only C key is available



William Gallison (U.S.A) Gabriel Grossi (Brazil) Alex Rossi (Holland,Brazil)



CHROMATIX Series

DELUXE CHROMATIC HARMONICAS

SUPER MODELS THAT ARE AS SMOOTH AS SILK

If harmonicas can be described as luxurious, the Suzuki Chromatix Series surely qualify. These 12, 14 and 16 hole harmonicas are gorgeous to look at, substantial to hold and a pleasure to play. Comfortable and airtight, the Chromatix Series is specially designed for professionals and hand constructed by skilled workers... one at a time. Features include ergonomically designed mouthpiece, precise and smooth slide mechanism, ABS comb, phosphor bronze reeds, extra thick brass reed plates and chrome plated covers. Enquire attention to detail makes these the most airtight chromatics ever produced by a major manufacturer. You only have to play a Chromatix once to hear and feel the difference. Their smooth tone production and quick response will allow you to advance your playing level far ahead of what you thought possible. Each Chromatix harmonica is packed in its own deluxe soft lined case.

- SCX-64** 16 hole, Cross-alignment slide, Available in the key of C (pictured)
- SCX-56** 14 hole, Cross-alignment slide, Available in the key of C
- SCX-48** 12 hole, Cross-alignment slide, Available in the keys of C, G, A, D, F and B



Rega Dauna (Indonesia)

Concept

Chromatic



Tremolo Chromatic

PROFESSIONAL TREMOLO CHROMATIC HARMONICA

ART & INNOVATION

The revolutionary Suzuki SCT-128 reflects the highest achievement in harmonica manufacture by combining technological breakthroughs with experience gathered since 1953. The beautifully streamlined compact body of the SCT-128 gives it the quality of the best Chromatic, with the combined unique tremolo sound. Old tunes can be reworked in a completely new way with the SCT-128, effective for the octave play method, allowing you a variety of different performances. Each one hand crafted, this unique model boasts more internal parts than any other Suzuki Harmonica!

SCT-128 16 hole, 64 notes, 128 reeds, Available in the key of C



SU-21W

Humming HIGH-CLASS

PROFESSIONAL WOODEN 21 HOLE TREMOLO HARMONICA

A TREMOLO HYBRID

The Suzuki Humming HIGH-CLASS uses Suzuki's unique Wood-Resin Composite comb, which was first used on the popular Manji Diatonic harmonica and has been very well received. This material contains more than 50% natural wood fibers, allowing you to enjoy the traditional sound of a wooden harmonica with the stability of an ABS comb - the best of both worlds! Impervious to moisture, the comb will never warp or crack.

SU-21W Available in 14 standard major and minor keys
SU-21W-4S 4 key Set : C, C#, A, and Am



Special

TRADITIONAL 21 & 24 HOLE TREMOLO HARMONICA

THE GOOD OLD DAYS NEVER SOUNDED LIKE THIS!

For the sound of yesterday from the technology of today, the Suzuki Tremolo Specials are sure to bring back memories. The Tremolo Specials have a traditional sound quality made possible by a dual hole octave/tremolo tuning action, excellent for folk and country style playing. Laser tuned reeds are extra lightweight to give that special harmonica octave effect. Available in 21 and 24 note models.

SU-21SP-N Available in the keys of C, C#, G, G#, A, A#, Gm and Am
SU-24 2T Available in the keys of C, C# and A



Dynamic Microphone

Suitable for playing Harmonica

HMH-200 Dynamic Microphone
CMH-6003 Microphone Holder



HRT-10 : Harmonica Reed Replacement Tool Set

Replacement Reed Plates & The others

- RP-300** For Overdrive, 7 keys
- RP-350** For Promaster, Hammond, Pipe Humming, 14 keys
- RP-350V** For Promaster Valve, 8 keys
- RP-M20** For Manji, 14 keys
- RP-M20S** For Manji Sky, 14 keys
- RP-C20** For OLIVE, 14 keys
- SHD-01** Slide Oil
- HMC-01** Harmonica Cloth (pictured)
- HMC-1M** Cleaning Glove M size (pictured)
- HMC-1L** Cleaning Glove L size (pictured)
- CV-M20W** M-20W wooden cover plates set
Compatible models: M-20, M-20S, C-20



Gregoire Maret Signature Models

PROFESSIONAL CHROMATIC HARMONICAS

GRÉGOIRE Maret Sound

The G-48's powerful and intense sound is combined with unique dark blue cover-plates. Their special plating is not just beautiful, but has high durability characteristics. This plating material is renowned for its longevity. The G-48W has a mellower and darker sound. The high durability Walnut cover-plates gives an elegant sophisticated look. These wooden covers create easy and secure handling, high durability and a beautiful dark sound in the overtones. The G-48W is the first-ever mass-produced chromatic harmonica with wooden covers.

G-48 Cross-alignment slide available in the key of C
G-48W Cross-alignment slide available in the key of C



Humming

DELUXE 21 HOLE TREMOLO HARMONICA

THE HIGH TECH HARP THAT MAKES OLD WORLD SOUND

The Suzuki Humming, Deluxe Tremolo Harmonica is a superb example of state-of-the-art technology that produces a beautiful old-world sound. Tremolo harmonicas are diatonic models constructed with double holes, each containing two reeds tuned to the same note. Each reed is tuned slightly higher than the other and when played together, this slight difference in tuning creates a beautiful vibrato or tremolo sound. "C" positions are marked on the comb for easy reference during performances. Many different kinds of gospel and old-world music sound using tremolo style harmonicas. This model just makes them sound that much better! Comes with carrying case.

SU-21HM Available in 14 standard major and minor keys



Hummingmate

Deluxe Tremolo 13 Hole Harmonica

The humming mate is an easy to hold compact version of our popular SU-21HM humming tremolo. Available in keys of C and Am, it has 13 holes and produces a beautiful old-world sound. Tremolo harmonicas are diatonic models constructed with double holes, each containing two reeds tuned to the same note. Each reed is tuned slightly higher than the other and when played together, this slight difference in tuning creates a beautiful vibrato or tremolo sound. Many different kinds of gospel and old-world music sound using tremolo style harmonicas. This one just makes them sound that much better.

SU-13M Available in 2 keys : C and Am



Condenser Microphone Set

ADD POWER TO ANY HARP EASILY

HMH-100 Condenser Microphone set
CI-5 Connecting Cable between HMH-100 and Amplifier



HRT-01: Harmonica Repair & Maintenance Tool Set

Hands Free Harmonica Holders

These harmonica holders feature a fully adjustable, lightweight design. The all construction features a durable stealth black finish. Model SHH-10R (pictured)

Microfiber Cleaning Cloths

for SUZUKI HARMONICAS
MIC-30



Microfiber Cleaning Glove

for SUZUKI HARMONICAS
MIG-1M, MIG-1L



Tremolo

Accessories

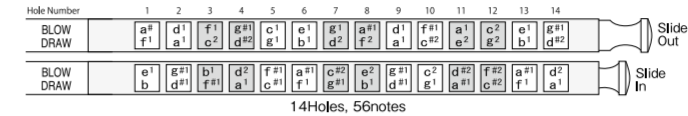


CHORD56

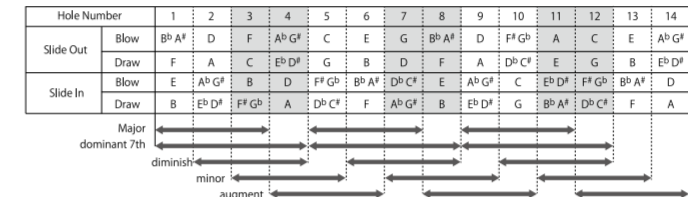
The CHORD56 SSCH-56 will open many new doors for the passionate and curious harmonica player. It is completely groundbreaking in the world of harmonicas. With this instrument, Suzuki Harmonicas show that they are truly a world leading harmonica developer. The instrument features all major, minor, augmented and diminished chords, inside a 14-hole chromatic harmonica. Incredible! The possibilities are endless, chord playing has never been so accessible and portable. (Commented by Filip Jers)

SSCH-56

NOTATION CHARTS



CHORD CHARTS *Root note of each chord is the note of leftmost



Baritone

RICH, DEEP ENSEMBLE SOUND

This harmonica has an octave lower range than a 21-hole Tremolo harmonica. Play this harmonica for a rich, deep ensemble sound. The Baritone harmonica has 21 holes with a range of C through C3 in the key of C, C#. The polished ABS comb holds the solid brass reed plates and laser tuned reed system. The polished black cover is shaped for maximum comfort.

SBH-21 Key of C and C# Range C-C#



Orchestral & Ensemble Chord Harmonicas

Suzuki has been producing the highest quality Harmonicas for over fifty years and has elevated the manufacturing process to an art form, as evidenced by the exceptional Orchestral Chord Harmonicas, pictured here. The Chord Harmonica is an essential part of ensemble performance and we're proud to offer the most exclusive instruments of their kind for your performance goals. Major and 7th chords are arranged on the upper row, and Minor, Diminished and Augmented chords are arranged on the lower row. The SCH-48 has 192 holes in 2 rows of the top and the bottom combs to create the 48 chords. Chords and melody are very easy to play. Each note has 2 reeds which create thick and rich chord sounds.

SCH-48 5 chord patterns, 48 chords

Major and 7th chords are arranged on the upper row, and Minor, Diminished and Augmented chords are arranged on the lower row. Each row has 24 chords (24 major chords on the upper row and 24 minor chords on the lower row) and each chord has 2 bass notes which are an octave apart. This new non-valved, single reed model has the ability to add your own bass notes to a chord providing strength of tone and fullness of sound. When accompanying another harmonica player, you have the effect of a trio ensemble!

BCH-48 5 chord patterns, 48 chords with basses



Hamonica Microphones

ORCHESTRAL CHORD MIC & ORCHESTRAL BASS MIC

HMC-2 Orchestral Chord Microphone for SCH-48, BCH-48
HMB-1 Orchestral Bass Microphone for SDB-39V2
HMB-3 Orchestral Bass Microphone for SDB-29V2

Mini Harmonicas minore & SONG STAR

5 HOLE, 10 REED MINI-HARMONICA
MHK-5 Available in the key of C, Range c2~c4
BLACK, WHITE, RED COLOURS

4 HOLE, 8 REED MINI HARMONICA
N-1200 with Necklace Range c2~c4
K-1200 with Keyholder Range c2~c4

Harmonica Tester

HMT-2
Suzuki HMT-2 is the Harmonica Tester model with the wooden top and bottom base. This tester has the blow & draw air system with bellows and there are two holes with slide for testing the single note and multi-note without having to physically play.

Chord Harmonica

Other